

BURNDY® TAKE OFF SERVICES



Connecting Power to Your World®



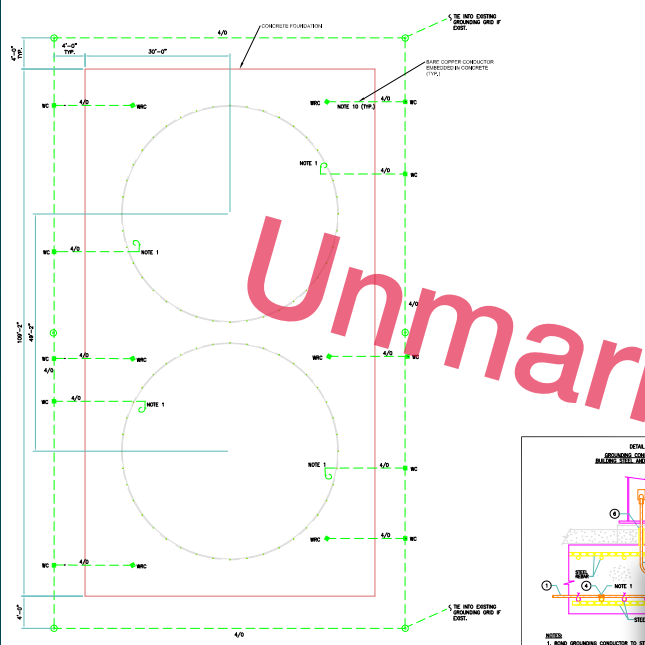


GROUNDING GENERAL NOTES

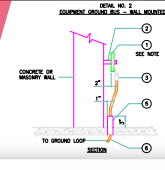
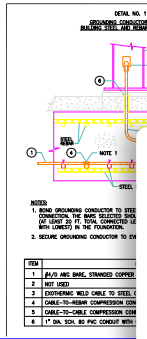
1. COVER A FEET OF #4/0 AWG GROUND CONDUCTOR INDICATED BY THIS GROUNDING IN THE WALLS, CONNECTED TO BRASS BAR BY ELECTRICAL
2. PROVIDE ALL LAMPS, MOTORS, EQUIPMENT, TOOLS AND SUPPLIES TO WORKERS WITH INSULATED HANDLES TO PROTECT AGAINST ELECTRICAL SHOCK. PROVIDE RECEIVING, UNLOADING AND PROTECTION FROM DAMAGE AND WEATHER
3. ALL ELECTRICAL WORK SHALL BE IN STRICT COMPLIANCE WITH THE REQUIREMENTS OF THE STATE OF OHIO AND THE NATIONAL ELECTRICAL SAFETY CODE (NEC)
4. ALL GROUNDING SYSTEMS, AS DETAILED IN THESE GENERAL NOTES AND AS INDICATED ON THE DRAWINGS
5. MATERIALS SHALL BE AS SPECIFIED. NO SUBSTITUTIONS WILL BE ACCEPTED. WITH MATERIALS OR EQUIPMENT NOT SPECIFIED, THEY SHALL BE OF THE SAME QUALITY AND PERFORMANCE AS THE MATERIALS OR EQUIPMENT SPECIFIED.
6. GROUNDING RESISTANCE TO EARTH SHALL NOT EXCEED 5 OHMS OR AS REQUIRED TO MEET OHIO, WPA, AND/OR LOCAL AND STATE CODES
7. ALL WIRE GROUNDING CONDUCTORS SHALL BE #4/0 AWG AND BARE COPPER CONDUCTOR, CLASS B STRANDED, UNLESS OTHERWISE NOTED
8. GROUND CABLE OUTSIDE OF THE FOUNDATIONS SHALL BE INSTALLED A MINIMUM OF 20' BELOW GRADE
9. GROUNDING CONDUCTORS SHALL BE CONCRETE STRANDED, SOFT DRAWN BARE COPPER CONDUCTORS UNLESS OTHERWISE NOTED
10. GROUNDING CONDUCTORS INSTALLED VERTICALLY IN FOOTINGS AND FOUNDATIONS SHALL BE LAYED AT TOP OF THE LOWEST LEVEL OF REBAR PRIOR TO CONCRETE POUR. SECURE GROUNDING CONDUCTOR TO REBAR USING 2" BRASS APPROXIMATELY 12" TO 18"
11. BRASS GROUND CONNECTION SHALL BE SCHEDULED WHEN CONNECTED TO BRASS BRASS/BRASS/STEEL CABLE
12. ALL OTHER GROUNDING MATERIALS SHALL BE IN ACCORDANCE WITH THE TYPICAL GROUNDING INSTALLATION
13. ALL TYPICAL WELD CONNECTIONS SHALL BE MADE STRICTLY IN ACCORDANCE WITH THE MANUFACTURER'S INSTRUCTIONS
14. ALL EXPOSED GROUNDING CONDUCTORS, INCLUDING ALL COATS LAMINATE, SHALL BE MECHANICALLY PROTECTED FROM DAMAGE AND WEATHER. PROVIDE PROTECTION AS SPECIFIED IN THE DRAWINGS
15. PROVIDE 1" WELDED THREADED FLOOR ANCHORS GROUND WIRE STRIP-UP SLEEVE TO EXTEND 3" ABOVE AND BELOW FLOOR
16. GROUND RODS SHALL BE COPPER CLAD STEEL WITH 3/4" DIA AND 120" LENGTH
17. ALL GROUNDING SYSTEMS SHALL BE BONDED TOGETHER AT GROUND LEVEL

LEGE

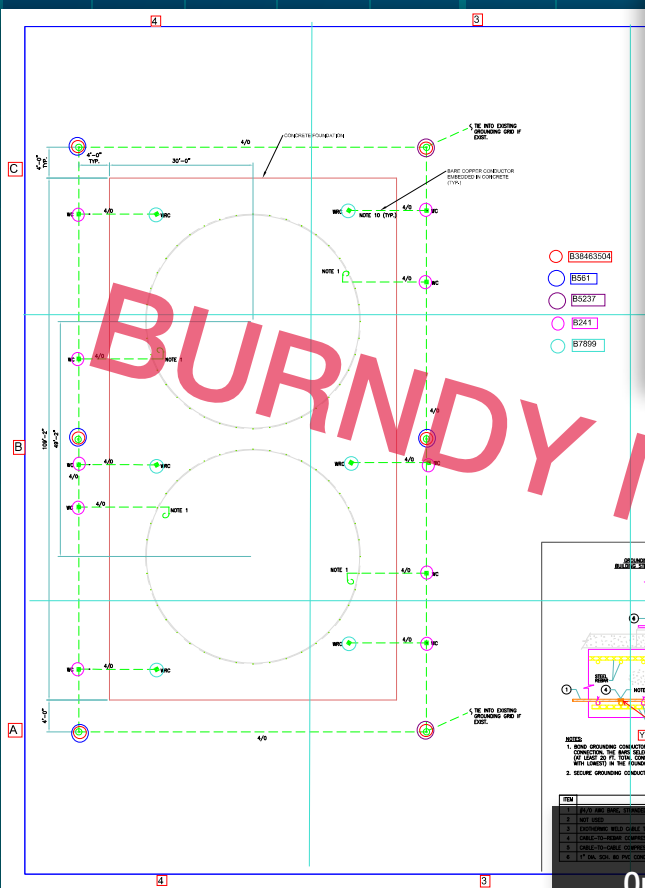
- 1/2" DIA. SOL. OR PVC CONDUIT WITH
- 1/2" DIA. SOL. OR PVC CONDUIT WITH
- 1/2" DIA. SOL. OR PVC CONDUIT WITH



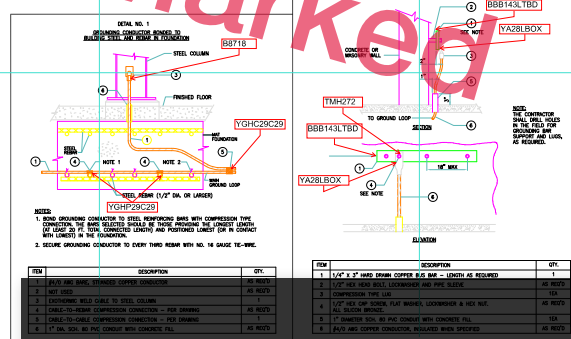
Unmarked



SI.No.	DRW.NO.	ITEM DESCRIPTION	CATALOGUE #	CARTRIDGE	PRICE KEY	HANDLE CLAMP	QTY
1	P170055-E-001	EXO THERMIC WELD CONNECTION CABLE #4/0 TO STEEL COLUMN	B8718	150	4	B106	As Required
2		COMPRESSION CONNECTION CABLE #4/0 TO REBAR #4	YGH29C29				As Required
3		COMPRESSION CONNECTION CABLE #4/0 TO CABLE #4/0	YGH29C29				As Required
4		COPPER BUSBAR	BBB143LTD				As Required
5		COMPRESSION LUG #4/0	YA28LBOX				As Required
6		HARDWARE KIT SILICON BRONZ - 1/2"	TMH272				As Required
7		GROUND ROD (3/4"x10')	B38463504				6
8		EXO THERMIC CONNECTION THROUGH CABLE #4/0 TO GROUND ROD 3/4"	B561	115	4	B106	4
9		EXO THERMIC CONNECTION 3 CABLE #4/0 TO GROUND ROD 3/4"	B5237	200	7	B106	2
10		EXO THERMIC T CONNECTION CABLE #4/0 TO CABLE #4/0	B241	150	4	B106	10
11		EXO THERMIC CONNECTION CABLE #4/0 TO REBAR #4	B7899	150	4	B106	6
12		WELD METAL	115				1 BOX
13		WELD METAL	150				2 BOX
14		WELD METAL	200				1 BOX
15		HANDLE CLAMP	B106				1
16		DIE FOR YGHP29C29, YGL29C29	U997P				1
17		DIE FOR YGHC29C29	U997				1
18		DIE FOR YA28LBOX	U28RT				1
19		DIE FOR YGHP34C29, YGL34C29	PU998				1
20		INSTALLATION TOOL FOR COMPRESSION CONNECTION	PAT750LI				1



BURNDY Marked



Our unique Take Offs raise the bar on the level of detail BURNDY can supply our customers in a short amount of time. Reference the job details with our easy to read grid system.

This Bill of Material (BOM) is based on the information provided and is an estimation of the materials needed to complete the project. BURNDY LLC is not a licensed contractor or engineering firm and one should be consulted for final project BOM.



At BURNDY, we are more than just a supplier, we are your technical partner. From data centers to control rooms and long cable runs, our exclusive take off program can arm you with part number level detail for BOM preparation.

Our expert BURNDY® Take Off Team can offer product suggestions and a devoted BURNDY Sales Representative is on hand for seamless communication throughout the process.

- We provide you with expert knowledge of BURNDY and competitor products.
- Receive the best possible solutions for all types of connections such as moving gates, swimming pools and lightning protection.
- Our product solutions meet all requirements for telecommunication, aerospace and military (FAA) projects as well as those for the federal government.
- Enjoy quick turn around time.
- There is absolutely no cost to you.

Go beyond BURNDY connectors. Our detailed take offs cross-reference everything from cable ties to power circuits and bring all of the BURNDY brands together including CMC®, BURNDYWeld® and Wiley.

Quality Data In, Quality Results in Return

Make sure to include specifications with drawings or an online link and password for the project. In return, the BURNDY® Take Off program can provide all specifications *for your entire project.*



Trust the BURNDY® Engineered System

The BURNDY® Engineered System of coordinating dies, connectors and tools are always designed to work together and engineered to meet stringent, accepted quality standards.



www.burndy.com | 1-800-346-4175

Customer Service Department

7 Aviation Park Drive
Londonderry, NH 03053
1-800-346-4175
1-603-647-5299 (International)

Canada

1-800-361-6975 (Quebec)
1-800-387-6487 (All other provinces)

Mexico

011-52-722-265-4400

Brazil

011-55-11-5515-7225

Tool Service Center

Littleton Industrial Park
Littleton, NH 03561
1-800-426-8720



Connecting Power to Your World®

