



CONNECT AND PROTECT

RackPower

INTELLIGENT POWER DISTRIBUTION UNITS

CADDY ERICO HOFFMAN RAYCHEM SCHROFF TRACER



RACKPOWER

INTELLIGENT POWER DISTRIBUTION UNITS

Trust in nVent's optimized solutions for connecting and protecting mission critical data center and networking infrastructure.

IP RackPower Hardware - SNMP

Hot pluggable IP hardware provides IP remote access to the PDUs using a single IP address chain. Only one IP gateway is required to access a maximum of 16 PDUs in a daisy chain.

Simply integrate the IP gateway to the 1st PDU, then the entire daisy chain group can be remotely accessed over IP.

All single PDUs can be individually managed over a web interface or using the free of charge RackPower Manager RPM software.

The RackPower PDUs are capable of integrating with Sunbird Power IQ software or other DCIM solutions.



Field Replaceable Meter

The PDU features a field replaceable RMS current meter with 3" color LCD display with touch screen functionality. The RackPower PDU features a field replaceable RMS current meter with a 3" color touch screen LCD display. The LCD display is located at the top of the PDU and provides local visibility to current (Amp), voltage (Volt), power (kW), energy consumption (KWh) and power factor of the entire PDU. The RMS meter provides a metering accuracy of +/- 1%.

The field replaceable module helps eliminate maintenance downtime by enabling replacement without a service interruption.



- Ensure Uptime
- Enjoy Flexibility
- Automate Your Infrastructure Management



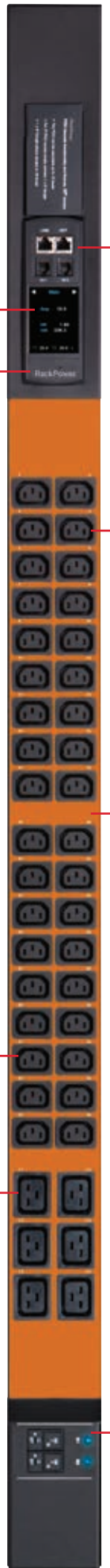
Multiple Outlet Configurations

RackPower PDUs are available with multiple outlet configurations per each individual PDU.

For example; one vertical PDU with 2xUK, 20xC13, 6xC19 outlets

Power Feed Entry Flexibility

Standard RackPower PDUs are configured with bottom power feed entry and may be customized with top power feed - available on request.



RACKPOWER

INTELLIGENT POWER DISTRIBUTION UNITS



Free Management Software

RackPower Manager enhances the benefits of RackPower PDUs by delivering a centralized remote management platform for the PDUs in multiple IP-access groups. The administrator can remotely manage the PDUs and the environmental sensors connected by the web browser.



Temperature & Humidity Sensors

A pair of sensors can be connected to one single PDU meter. Temperature or Temperature & Humidity (2in1) external sensors are available with a 2m or 4m long cord. Sensors have a low profile design with magnetic base for easy affixing to the cabinet/rack.

Advanced IEC cable retaining

IEC lock outlets or simple cable sleeves offer protection against the unintentional removal of cables from the PDU C13 or C19 outlets.

Chassis Color

PDU casing and outlet colors may be specified to enhance cable management and visualization of the power sources. It allows differentiation of power feeds (A & B) if required. The most common combinations are red & blue or black & grey/white. Other colors including yellow, green, orange and purple are available.

Field replaceable Power Supply with Latching Relays

To protect mission critical equipment from unplanned downtime, outlet switching must be controlled via bistable/latching relays.

The unit power supply is field replaceable (hot swappable) and latching relays ensure 'always on' operational performance and outlet status when returning to a pre-power outage condition after a planned or unplanned shutdown.



Resettable Fuse

- Protected load segments for increased reliability
- Overload reset button
- Cost effective solution for safety operation



Circuit Breaker

- Protected load segments for increased reliability
- Overload switch
- Designed with fully shrouded protective cover to prevent accidental ON / OFF operation

RACKPOWER

INTELLIGENT POWER DISTRIBUTION UNITS

RackPower Intelligent Power Distribution Units (iPDUs) deliver smart and reliable power management for a broad range of applications.

RackPower units can be configured to suit all your requirements, whether basic, metered, switched, combination metered/switched - both strip and outlet level configurations available. RackPower includes a field replaceable high-accuracy meter and power module with efficient latching relays to ensure sequential start up and remote power reboot.

RackPower SERIES

	RP3000	RP2000	RP1500	RP1000	RP100
Outlet Measurement	X		X		
Outlet Switch ON / OFF	X	X			
Latching Relay	X	X			
SNMP Hardware	X	X	X	X	
Strip level measurement	X	X		X	X

ELECTRICAL

Individual Fuse Option
Vertical & Horizontal Mounting
Multiple Outlet Configuration
Tool-less Mounting
Single and three phase
Fuse / Circuit Breaker - Option
Surge Protector - Option
EMI Filter - Option
Three Phase - Option
Regional voltages

SMART

Hot-pluggable Meter
3" Touchscreen
DC Module
SNMP Hardware
Sensor Port x 2 (Temperature & Humidity)
Management Software
16 x PDU in Single Daisy Chain
One IP Access 16 x PDU Levels
Aggregate Amp Measurement
Local Ammeter

RACKPOWER

INTELLIGENT POWER DISTRIBUTION UNITS

Sensors

- External sensor available with 2M or 4M cord
- Plug and play
- Low profile design with magnetic base for easy affixing to the cabinet
- Pair of sensors can be connected to one single PDU meter



External Door Mount PDU Display

The external door mount PDU display provides a highly visible local display without the need to open the cabinet's rear door to read the PDU(s) information.

- External Door Mount PDU Display provides RJ-11 port x 2 for PDU amp. & Temperature monitoring
- The display will be connected back to each IP PDU via door and a 3m RJ-11 cable



IP Hardware - SNMP

- Patented design
- Hot pluggable for easy integration
- Allows IP remote access to the PDUs by a single IP address
- One IP hardware supports a maximum of 16 PDUs in daisy chain
- Highly cost effective method to access the intelligent PDUs
- SNMP
 - >IP Hardware for Vertical PDU
 - >IP Hardware for Horizontal PDU



Dual Feed PDU - 1 Chassis 2 PDUs

Two PDUs in one chassis.

- Easy installation
- Colored layout
- One shared meter, two PDUs
 - Local monitoring
 - Up to 32 PDUs in a single cascade group
- Cord and cable management
 - Minimize erratic data transfer as well as EMI
 - Distinguishes Data and Power Cabling
 - Space saving design



iATS - Intelligent Automatic Transfer Switch

- ATS <10ms transfer time – for equipment with one Power Supply Unit (PSU)
- Input preference switch for priority power feed
- Redundant power for single-corded equipment
- Auto switching relay for seamless power transfer
- 8 to 20 IEC outlets - Custom configurations available
- LED meter for true RMS local current monitoring
- 1 U & 2 U versions
- Single- and three-phase configurations
- Country-specific outlets



RACKPOWER

INTELLIGENT POWER DISTRIBUTION UNITS

Model Code Builder

Direction	Number of phases	Outlet quantity	Outlet Type 1	Outlet quantity	Outlet Type 2	Outlet quantity	Outlet Type 3	Rating	Model Type
V = Vertical	P = 3Phase	02	UK1 = UK 45° Sockets	02	C13 = C13 outlets	02	C19 = C19 outlets	13A	B = Basic
H = Horizontal	"Leave blank for single phase versions"	04	UK2 = UK 135° Sockets	04	"If no C13 outlets required leave blank"	04	"If no C19 outlets required insert leave blank"	16A	RP1 = RP100
		06	UK3 = UK 90° Sockets	06		32A		RP10 = RP1000	
		08	SCH = CEE7/4 Schuko	08		10A		RP15 = RP1500	
		10	US = Nema Sockets	10		20A		RP20 = RP2000	
		12	UTE = CEE7/5 Schuko	12		30A		RP30 = RP3000	
		16	"If none of these socket types required insert leave blank"	14		20A (3P)			
		20		16		30A (3P)			
		24		18		16A (3P)			
		20		32A (3P)					
			24	63A (3P)					
			28						
			32						
			36						
			36						

Example	V	P	4	US	/	20	C13	/	4	C19	-	30A	-	RP30
Model Code: VP4US/20C13/														



ONLINE RACKPOWER PDU CONFIGURATOR

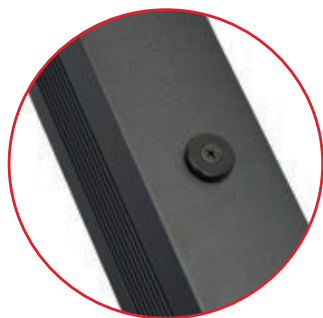
Use our online configurator to specify your PDU and receive a quote that matches 100% of your requirements



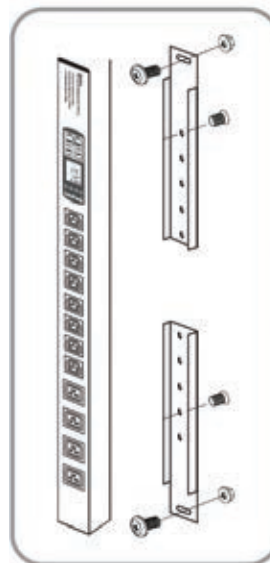
Scan Code for more information

Vertical Mounting

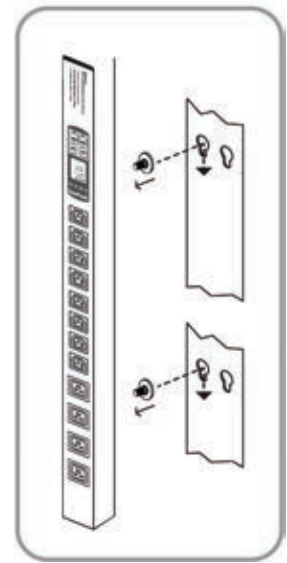
- Quick and tool-less integration simplifies PDU installation
- Vertical Button Mounting Kit: Designed for nVent cabinets with keyhole type mounting holes on the rear verticals
- Vertical Bracket Mounting Kit: Easy installation by mounting the PDU to the cabinet cable tray or frame



Bracket Kit



Button Kit



RACKPOWER

INTELLIGENT POWER DISTRIBUTION UNITS

Input Plug	Cord Length	Feed Input	Dual Feed	Color	Protection	Additional requirements
L5 20P	1 = 1m	B = Bottom	DF	1 = Black RAL 9005	1 = Circuit Breakers	L = LSZH input cord
L5-30P	2 = 2m	T = Top	"If dual feed is not required leave blank"	2 = Blue Pantone 200c	2 = Individually fused	E = Extenral earth cord supplied
L6 20P	3 = 3m			3 = Red Pantone 300c	3 = EMI filter	S = Special requirment
L6-30P	4 = 4m			4 = Grey White RAL 9002	4 = Resetable individual fuses	RCM = Residual Current Monitoring
L15 20P	5 = 5m			5 = Yellow RAL 1018	5 = Surge Protection	"If there are no additional requirements leave blank"
L21 20P	6 = 6m			7 = Purple RAL 4006	"If there is no protection needed leave blank. Circuit breakers will be added if mandatory to fullfil national standards."	
L15 30P	7 = 7m			8 = Orange RAL 1007		
L21 30P	8 = 8m			9 = Green RAL 6029		
60309	9 = 9m					
C20	0 = 10m					
UK						
Schuko						
UT = Unterminated						
C14						

-	60309	/	3		B	-		-	1	-	1	-
---	-------	---	---	--	---	---	--	---	---	---	---	---

4C19-30A-RP30-60309/3B-1-1



RackPower Manager Software (FREE)

Ultra density PDU Management can be achieved with RackPower Manager, the associated software for RackPower PDUs. Supporting remote management of multiple PDU daisy chain groups.

- RPM-04 supports up to 720 PDU's (45 PDU Groups)
- RPM-04 provides the basic functions of:
 - Monitoring or measurement of Amps, Volts, kW, kWh, Power factor and Temperature / Humidity
 - Remote switching ON / OFF per individual power outlets
 - Reporting
 - Alarm setting
 - PDU Outlet measurement
 - Grouping and chart reporting (These functions are provided by higher software editions)

RackPower Manager enhances the benefits of RackPower PDUs by delivering a centralized remote management platform for the PDUs in multiple IP-access groups.

The administrator can remotely manage the PDUs and the environmental sensors connected by the web browser.

- Wide functionality
- Concise monitoring pages
- Mass scale PDU management
- Scalable solution
- Flexibility by multiple users
- Cost effective

The RackPower PDUs are capable of integrating with Sunbird Power IQ software or other DCIM solutions.

North America

Minneapolis, MN	Tel: +1.763.421.2240
Mexico City, Mexico	Tel: +52.55.5280.1449
Toronto, Canada	Tel: +1.416.289.2770

South America

Sao Paulo, Brazil	Tel: +55.11.5184.2100
Boituva, Brazil	Tel: +55.15.3363.9148

Europe

Betschdorf, France	Tel. +33.3.88.90.64.90
Straubenhardt, Germany	Tel: +49.7082.794.0
Dzierzoniow, Poland	Tel: +48.74.64.63.900
Assago, Italy	Tel. +39.02.5776151.224

Middle East & India

Dubai, United Arab Emirates	Tel: +971.4.378.1700
Bangalore, India	Tel: +91.80.6715.2001

Asia

Shanghai, P.R. China	Tel: +86.21.2412.6943
Singapore	Tel: +65.6768.5800
Shin-Yokohama, Japan	Tel: +81.45.476.0271
Seoul, Korea	Tel: +82.2.2129.7755
Qingdao	Tel: +86.532.8771.6101

Our powerful portfolio of brands:

CADDY ERICO HOFFMAN RAYCHEM SCHROFF TRACER



[nVent.com/DNS](https://www.nvent.com/DNS)