



## Table of Contents

### Products

<b>Racks and Integrated Solutions</b> .....	<b>3</b>
<b>Single-Phase UPS &amp; Power Assurance Package</b> .....	<b>4</b>
<b>Three-Phase UPS</b> .....	<b>9</b>
<b>Rack Power Distribution</b> .....	<b>9</b>
<b>Avocent® KVM Switches and Serial Consoles</b> .....	<b>11</b>
<b>Software</b> .....	<b>18</b>
<b>Rack Cooling</b> .....	<b>20</b>
<b>Site Applied Products</b> .....	<b>20</b>

Contact your Local Vertiv Office for application support and pricing

## Racks and Integrated Solutions

### Vertiv™ VR Rack System



**The Vertiv™ VR rack** is delivered ready for high density environments to serve your mission critical needs — even as they evolve and change.

- Available in eight standard sizes with load capacities of 3,000 pounds static and 2,250 dynamic.
- All models feature a frame design that delivers about 2.5 inches of additional useable depth compared to competitive racks.
- Features easily removable side panels to help you access your equipment easily, making it easier to make changes in small spaces.
- Tool-less design features enable easy rack configuration and adjustments, equipment installation and service.
- Comes with a three-year limited warranty against defects in material and workmanship.
- Available to ship with integrated rack PDU.

**Capacity:** 3,000 lbs Static Load.

**Rack Sizes:** Heights: 42U, 45U, 48U.

**Widths:** 600mm, 800mm.

**Depths:** 1100mm, 1200mm.

**Key Applications:** Servers and Networking equipment.

**Certifications:** EIA 310E, UL2416, RoHS, REACH, TAA compliant.

### Vertiv™ DCE Rack System



**The Vertiv™ DCE rack system** is ideal for today's data centers and is designed to meet flexibility, ease of installation and delivery requirements. The Vertiv DCE comes in pre-configured rack configurations customized to meet your specific needs.

- Compatible with Vertiv™ rack PDUs, Liebert® rackmount UPS, aisle containment, and Liebert® modular busway.
- Factory installation of rack accessories for fast deployment.
- Easy installation saves time and money: tool-less hinges, dual split side panels, 19" rail adjustment, U markings on rails, low profile casters, tool-less accessories.
- Comes with a two-year limited warranty against defects in materials and workmanship.

**Capacity:** 3,000 lbs Static Load.

**Rack Sizes:** Heights: 24U, 42U, 45U, 48U.

**Widths:** 600mm, 700mm, 800mm.

**Depths:** 1100mm, 1200mm.

**Key Applications:** Servers and Networking equipment.

**Certifications:** EIA 310E, UL2416, BAA/ TAA Compliant, IBC2012.

## Vertiv™ Liebert® MCR Integrated Support System in a Single Enclosure



**Capacity:** 1.6 and 3.2 kW.

**Type:** Self-contained.

**Floor:** Primarily non-raised.

**Key Applications:**

Network closets, server closets or small rooms.

**Certifications:**

TAA/BAA compliant.

**The Liebert® MCR** is a data center rack system that features a load-sized, computer-grade air conditioner located at the bottom of the enclosure, offering top-mount design, supplying cool air to sensitive equipment on all levels.

- Integrated cooling cabinet with optional power management and monitoring accessories, for loads up to 1.6kW and 3.2kW.
- Includes primary and offers optional backup cooling feature.
- Mobile design for quick deployment – Lets you place a self-contained minicomputer room right where you need it, today or tomorrow.
- Lower system TCO, competitively priced as an integrated system, compared to purchasing separate components.

## Vertiv™ VRC-S Edge Ready Micro Data Center System



**Vertiv™ VRC-S** is available in eight pre-built standard sizes with two voltage options (120V or 208V), the solution incorporates a rack power distribution unit (PDU), monitoring software, and the new Vertiv™ VRC self-contained rack cooling unit in an enclosed standard IT rack.

- All components are guaranteed to work seamlessly to meet your requirements and the system is ready to ship in days.
- Choose the size and voltage you need to optimally support your IT equipment; enclosed system enhances security and cooling efficiency.
- 3-Year standard warranty with optional 5-year protection for the rack and rPDU.
- Complete installation and on-site service and support available.

## Single-Phase UPS & Power Assurance Package

### Vertiv™ Liebert® PST5 UPS, 350-850VA



**The Liebert® PST5** is an offline UPS technology that provides power backup protection for desktop computers, gaming consoles, workstations, wireless networks and routers, surveillance systems and other electronics.

- Designed with easy controls for worry free operation, the Liebert PST5 features ample time for you to save your work in progress and/or complete an orderly shutdown for your equipment when you experience a power outage.
- Protects televisions, desktop computers, gaming consoles, workstations, networks/ routers, surveillance and other important electronics.
- ENERGY STAR certified UPS provides backup power and protection during damaging surges, spikes or power outages while remaining energy efficient.



## Vertiv™ Liebert® PSA5 UPS, 500-1500VA



**The Liebert® PSA5 UPS** is an economical, line-interactive UPS battery backup technology designed with the features you need for reliable power protection for small/home office computers, network gear, and home equipment shutdown.

- Designed with easy controls for user friendly operation, the Liebert PSA5 provides the run time to save work in process and start an orderly shutdown your equipment.
- Provides backup power and protection during damaging surges, spikes or power outages.
- Excellent three-year full unit coverage including the battery with no-hassle, advanced replacement warranty.

## Vertiv™ Liebert® PSI5 Line-Interactive UPS, 750-5,000VA



**The Liebert® PSI5** is a compact rackmount or tower, AVR line-interactive UPS system designed especially for IT applications such as network closets and small data centers.

- Intellislot for networking cards and remote management.
- Eight capacities from 750VA to 5000VA with both 120V or 208V models.
- Up to 6 minutes of runtime at full load. External battery cabinets to extend runtime.
- AVR technology to protect against voltage fluctuation and maximize battery life.
- Mini Tower, 1U and 2U Rack/Tower.
- Two-year no-hassle advanced replacement warranty.
- TAA models available.

## Vertiv™ Liebert® PSI5 Lithium-Ion UPS, 1500-3000VA



Lithium-ion technology delivers double the life of lead-acid batteries along with a lower total cost of ownership, making the **Liebert® PSI5 Lithium-Ion line-interactive UPSs** ideally suited for server rooms, network closets, and other edge or distributed IT applications.

- 0.9 Output Power Factor delivers more usable power, saving space and costs.
- 1500, 2200, and 3000VA 2U Rack/Tower models, and 1500VA Mini Tower model.

### Key Benefits vs. VRLA

- Lower total cost of ownership – few (or no) battery replacements, less maintenance.
- 2-3 times longer battery life.
- Longer runtime, up to 9min at full load.
- 5-year factory warranty.
- Quicker recharge times – up to 100% in 3 hours or less.
- More resilient to high temperatures.

## Vertiv™ Liebert® GXT4 Single Phase, Online Double Conversion UPS, 1000-3000VA, TAA



**The Liebert® GXT4 TAA** is a true on-line UPS that delivers continuous, high-quality AC power to IT equipment with no break when transferring to battery.

- On-line UPS provides zero transfer time and is generator-friendly so your critical equipment is supported by a seamless flow of conditioned power.
- Configurable Eco-Mode operation for improved efficiency.
- Liebert® Intellislot IS-UNITY-DP communications card (Web and SNMP protocols).
- Optional environmental sensors, connect up to 10 simultaneously (temperature, humidity, contact closure, and leak detection).
- Convertible rack/tower configuration.

## Vertiv™ Liebert® GXT5 Single Phase, Online Double Conversion UPS, 500-20,000VA



**The Liebert® GXT5 UPS** is a generator-friendly double conversion online UPS solution which offers premium power protection and continuous power conditioning in a compact and flexible rack/tower design.

- Enhanced local and remote management capabilities enable users to understand the status of the UPS and environmental conditions, and take action when necessary.
- High power factor operation up to unity provides the highest available real power (watt) for use by connected IT equipment, allowing for the protection of more connected devices.
- Integrated serial connection for Vertiv™ Avocent® Advanced Console Server (ACS) integration or direct terminal control of the UPS.
- Energy Star 2.0 certification with high efficiency in online (up to 95%) and Active ECO (98%) modes.
- Web and SNMP communications for remote monitoring and management of the UPS with optional RDU101 network card and free Vertiv™ Power Insight software.
- Factory-installed RDU101 Network Card included with 5-20kVA models.
- Integrated Maintenance Bypass Cabinet (MBC) for UPS maintenance or replacement without shutting down connected equipment included in 5-10kVA models. Optional O-U MicroPODs available for 500-3000VA models.

## Vertiv™ Liebert® APS Single Phase, Modular Online Double Conversion UPS, 5kVA - 20kVA N+1



**The Liebert® APS** is a double conversion on-line UPS that provides mission-critical availability while reducing costs and maintaining flexibility for the future.

- Modular and scalable UPS with internal redundancy capability.
- Ideally suited for small-to-medium data center, network closets and IT server rooms in either a rack or free-standing format.
- Offers capacity-on-demand with scalable FlexPower™ core modules — allowing capacity upgrades in 5 kVA/4.5 kW increments — without powering down.
- Liebert® Intellislot IS-UNITY-DP communications card factory installed (Web, SNMP and BMS protocols).
- Optional Environmental sensors, connect up to 10 simultaneously (temperature, humidity, contact closure, and leak detection).

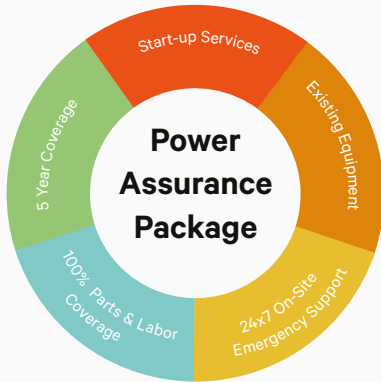
## Vertiv™ Liebert® MicroPOD Maintenance Bypass Switch, for UPS Systems 3kVA and smaller



**The Liebert® MicroPOD** allows manual transfer of connected equipment to utility power via a maintenance bypass switch, permitting scheduled maintenance or UPS replacement without disrupting power to the connected equipment.

- “Must have” accessory, provides power transfer to avoid shutdowns due to UPS servicing.
- Specifically designed to mount to the rear of the Liebert® GXT UPS or capable of separate rack mounting allows it to be used with any single phase UPS.
- Provides bypass and multiple output plug configurations for easy system configuration.
- Extremely affordable – enables broad usage in critical applications.

## Power Assurance Package



**Vertiv's exclusive Power Assurance Package** offers lifecycle power management for critical single-phase UPS systems, eliminating the concerns surrounding all aspects of UPS support.

- Available with Vertiv™ Liebert® APS, Vertiv™ Liebert® PSI and Vertiv™ Liebert® GXT UPS products, from 500VA – 10kVA.
- Installation and startup services.
- Five-year, hassle-free protection plan.
- Safe disposal of UPS/battery.
- 24x7 on-site emergency response.
- Parts and labor coverage.

*With the Vertiv™ Trade-In program, you can save money on the cost of state-of-the-art Vertiv™ Liebert® GXT, Vertiv™ Liebert® PSI, or Vertiv™ Liebert® APS UPS systems while eliminating the hassle and cost involved with recycling your old units.*

*You can trade in almost any aging single-phase UPS unit\*—Vertiv or a competitor's brand—and choose to upgrade to a new Liebert GXT or Liebert PSI UPS system. These advanced systems combine higher availability with exceptional energy efficiency to afford better protection for your equipment at lower operating costs.*

## Power Continuity Services



**Vertiv™ Power Continuity Services** is a complete line of battery and UPS replacement services for the Liebert® GXT and Liebert® PSI systems, commonly used at the edge of an IT network in small or remote sites. Three levels of services that help ensure continuous power for your vital applications:

- UPS restoration services provides a replacement UPS battery pack, shipped from Vertiv, ready for your IT resources to install.
- UPS refresh includes a replacement battery pack, installation and startup by our factory-authorized technicians, a wellness check, spent battery removal and disposal, optional two-year service contract, and optional remote services.
- UPS replacement gives you a new UPS with installation, startup, legacy equipment removal and disposal, an optional five-year protection plan, and optional remote services.



## Three-Phase UPS

### Vertiv™ Liebert® ITA2 UPS 3-Phase 10kVA



**The Liebert® ITA2 UPS** offers economical, efficient and reliable three-phase power for critical loads under 10kVA.

- Flexible placement: Use in a rackmount or tower configuration.
- Features scalable battery runtimes, output distribution options, a high power factor and an optional maintenance bypass cabinet.
- Compact, high power density and high power factor maximizes the usable power.
- Lower first costs and lower TCO compared to competitive models.

### Vertiv™ Liebert® EXS UPS 3-Phase 10 - 30kVA



**The Liebert® EXS UPS** delivers maximum power capacity, simplicity, reliability and efficiency in a compact three-phase power solution with a reduced footprint.

- Robust availability is ensured from the integrated maintenance bypass and advanced monitoring capabilities.
- Flexibility is enhanced using output distribution and variable battery runtime options.
- Low TCO is maintained from the high operating efficiency levels and reduced installation costs.

## Rack Power Distribution

### Vertiv™ Geist™ Basic Rack PDU



**The Vertiv™ Geist™ Basic Rack PDU** family delivers reliable power distribution at a competitive price point.

- Every unit is 100% tested for reliability and functionality.
- Flexibility to meet a broad range of requirements, with a variety of electrical and receptacle configurations available.
- North American units are UL listed in accordance with common data center and insurance provider requirements.
- Can be shipped integrated in a Vertiv™ VR rack.

**Certifications:** TAA compliant.

## Vertiv™ Geist™ Monitored Rack PDU



**Certifications:** TAA compliant.

The **Vertiv™ Geist™ Monitored Rack PDU** family delivers reliable power distribution with the ability to monitor input power to plus or minus 1 percent accuracy and provide environmental monitoring capabilities.

- The upgradeable, hot-swappable IMD enables seamless upgrades and replacements.
- Fault-tolerant daisy chaining can link up to 40 devices to provide redundancy.
- Select units come with patented U-Lock receptacles to prevent unintentional dislodging of power cords.
- Select units feature the Combination Outlet C13/C19 receptacle to accommodate ever-changing rack power requirements with the flexibility to connect C14 and C20 plugs in the same outlet.
- Can be shipped integrated in a Vertiv™ VR rack.

## Vertiv™ Geist™ Switched Rack PDU



**Certifications:** TAA compliant.

The **Vertiv™ Geist™ Switched Rack PDU** family delivers reliable power distribution with the ability to monitor and control power at each outlet.

- Bistable latching relays significantly reduce the unit's power consumption.
- The hot-swappable interchangeable Monitoring Device (IMD) includes directory access protocol for secure authentication and is upgradeable to add capabilities as needed.
- Select units come with patented U-Lock receptacles to prevent unintentional dislodging of power cords.
- Can be shipped integrated in a Vertiv™ VR rack.

## Vertiv™ Geist™ Universal PDU (UPDU)



**Certifications:** TAA Compliant.

The **Vertiv™ Geist™ UPDU (Universal Power Distribution Unit) and Vertiv™ Geist™ FSC (Facility Side Cable)**, utilize a universal input to simplify global IT power infrastructure deployments by enabling a single Geist™ UPDU model to be used with a wide range of Geist™ FSC options available in various regionally-specific power configurations.

- 11kW and 22kW max power capacity models available to meet current and future power requirements.
- Color-coded U-Lock receptacles provide easy circuit identification and extra secure protection.
- Combination Outlet C13/C19 receptacles accommodate ever-changing rack power requirements with the flexibility to connect C14 and C20 plugs in the same outlet.
- Remote management through serial communication or any standard web browser.
- Dual network ports allow a fault-tolerant daisy-chain loop of up to 40 rPDUs, or connect up to 50 rPDUs using IP aggregation.
- All universal PDU models include ports for environmental sensors like temperature and door position.
- Every unit is individually tested to ensure reliability and functionality.

## Distribution Assurance Package



Vertiv's exclusive **Distribution Assurance Package** offers lifecycle service and support for Vertiv™ rack PDUs from trained OEM service partners, ensuring system availability.

- Available with Vertiv™ Geist™ rack PDUs.
- Startup and installation services.
- OEM expertise.
- Seven-year protection plan.
- 24x7 on-site emergency response.
- Parts and labor coverage.
- Optional removal and disposal.

## Vertiv™ Avocent® ITS Solutions

### Vertiv™ Avocent® ADX Ecosystem



**Avocent® ADX Ecosystem** provides agility, scalability and the best performance and control in managing IT devices; anytime, anywhere. It is designed to support ever changing needs of the data center, from Edge to Enterprise.

- Fastest and most feature rich KVM experience on a single device.
- All digital architecture for flexible and scalable deployments.
- Most expansive management of IT devices.

### Vertiv™ Avocent® ACS 800 Advanced Console Systems



**Avocent® ACS 800 Advanced Console Systems** have secure in-band and out-of-band access to manage, monitor, and troubleshoot servers, routers, network switches, firewalls, UPS systems and PDUs, with a small form factor for edge and remote locations.

- Controlled access to your equipment with high reliability, single point of authentication and remote accessibility to safely and efficiently manage your IT equipment.
- Zero Touch Provisioning provides automated configuration of Avocent ACS devices.
- Integrated Power Management with Vertiv™ PDUs such as Vertiv™ rack PDUs, Liebert® UPS systems as well as third-party power product vendors.
- Environmental Sensor Port and digital Inputs to read conditions around equipment such as temperature, humidity, smoke, leak and pressure differential as well as monitoring of dry contact sensors for activity.

## Vertiv™ Avocent® ACS 8000 Advanced Console Systems



**The Avocent® ACS 8000 Serial Consoles** deliver secure in-band and out-of-band visibility and control to downstream equipment in enterprise data centers, as well as cloud and colocation facilities.

- Integrated Power Management with Vertiv™ PDUs such as Vertiv™ rack PDUs, Liebert® UPS systems as well as third-party power product vendors.
- Cellular capabilities for primary connectivity at remote locations or failover during network outages.
- Access and troubleshoot remote locations using automatic network failover to cellular, Ethernet or analog modem.
- Fast, automated configuration with Zero-Touch Provisioning (ZTP) .
- 8 USB ports to support new IT equipment and external devices.

## Vertiv™ Avocent® MergePoint Unity™ KVM over IP Switch



**The Avocent® MergePoint Unity™ KVM over IP Switch** provides IT administrators a complete remote management solution to access and control servers, networking equipment and other devices found in data centers and branch offices.

- Meet service level agreements and minimize downtime through a unified approach that provides IT administrators a faster method to diagnose, reconfigure or restore equipment.
- Virtual Media support enables USB media such as CD-ROMs, flash memory and external drives to be virtually attached to a remote server's USB port.
- CAC/Smart Card Support allows remote or local users to map a USB-based smart card reader to the attached servers and authenticate using their smart cards.
- FIPS 140-2 compliance: based on the FIPS 140-2 validated cryptographic modules (certificate number 1051).
- Remote KVM sessions support HTML5 which eliminates the need to install a java on clients.

**Certifications:** TAA compliant, FIPS 140-2.

**Compliance:** Based on the FIPS 140-2 validated cryptographic module(s) (Certificate #1051).

## Vertiv™ Avocent® AutoView™ AV3000 KVM Switches



**The Avocent® AutoView™ AV3000 series** offers consolidated server management options for small data centers and remote/branch/offices.

- Simplify local and remote access to your IT infrastructure with a best-in-class, field-proven line of Avocent® switches.
- Switches can be tiered to provide consolidated management of up to 256 targets.
- Common Access Card (CAC)/Smart Card support with encryption and password protection provides security you can depend on.

## Vertiv™ Avocent® AutoView™ AV100 KVM Switches



**The Avocent® AutoView™ AV100** KVM basic switch offers simplified local access, management and control of up to 16 targets from a single console.

- This single user, smaller form factor KVM switch is designed specifically for IT rooms, small data centers and branch offices.
- Single-user, small 0U/1U or desktop form factor KVM switch allows local user to control up to 4 computers from single keyboard and mouse.
- Supports both VGA and DisplayPort (DP) targets with a resolution of up to 2048 x 1536.
- Switch between targets with the simple on-screen display (OSD), intuitive touch buttons, hot-key operation and scan mode.

## Vertiv™ Avocent® LCD Local Rack Access (LRA) Console



**Certifications:** TAA compliant, UL, CE, CCC, BSMI, RCM, cUL, IC, EAC, VCCI, KCC FCC Class A.

**The Avocent® LRA Console family** provides the simplicity, efficiency and ease of use to make it the perfect in data center access point. The LRA line enables ease of access to multiple servers making software upgrades, troubleshooting, and system monitoring convenient and less time-consuming.

- Provides an installed and integrated access point in the data center.
- Requires only 1U of rack space.
- Compatible with all Vertiv data center KVM switches.
- Keyboard available in 8 languages.
- Power efficient during operation and standby.
- Available in an 8- or 16-port digital KVM switch bundle.
- Includes a widescreen LED LCD panel and a full desktop-style keyboard with touchpad.

## Vertiv™ Avocent® HMX 5000/6000/8000 High Performance KVM Systems



**The Avocent® HMX High Performance KVM system** is a digital, IP-based solution that provides a highly flexible way to connect hundreds of users to thousands of servers and workstation equipment in a secure, real-time manner.

- Ideal for control rooms with real-time control with pixel perfect digital video, supporting resolutions up to 2560 x 1600 at 60Hz.
- Supports redundant network operation through units that automatically detect whether the network is in operation and automatically change to a second port when a failure is detected.
- Enables connection of USB devices from mice and keyboards through to graphics tablets and joysticks alongside mass storage devices.
- Remote maintenance and out-of-band BIOS level access with high video performance through Real VNC viewer.
- Easy centralized management with user rights and audit trails through the Avocent® HMX Advanced Manager.
- Small form factor transmitter available that takes up zero-U of rack space.

**Certifications:** TAA, CE, FCC approvals.



## Vertiv™ Avocent® HMX 6500R High Performance KVM Receiver



**The Avocent® HMX 6500R High Performance KVM System** receiver delivers KVM and VM access without requiring additional hardware or compromise on KVM functionality.

- Crisp and clear picture quality, audio, and USB 2.0 to single/dual screens over a single 1GbE link.
- Real-time access to unlimited physical and virtual machines from a single human-machine interface.
- Dual-head displays for physical machines or Single-head display for virtual machines (not both).
- Virtual Machines count towards endpoint license.
- Accessible anywhere on any device with ease and security.

## Vertiv™ Rack Mount Power Supply (RMPSU)



**The Vertiv™ RMPSU** delivers the same reliability of Avocent's traditional power solutions but with economies of scale and convenience that aren't possible with external power supplies.

- Each unit provides 8 or 16 independently controllable 12V outputs.
- Cable converters available for 12V to 5V conversions.
- Control and monitor the Vertiv RMPSU via a secure HTTP interface.
- Rated to 500,000 hours.

## Vertiv™ Avocent® Matrix Direct Connect High Performance KVM System



**The Avocent® Matrix Direct Connect High Performance KVM System** is a digital, direct connect solution that provides a scalable environment through the use of proprietary switches, providing guaranteed performance quality.

- Less than half a second.
- Digital and analog video support with an Advanced Dambrockas Video™ Compression algorithm enables a pixel-accurate, lossless video experience with lag-free, real-time interaction to computing equipment via any USB enabled device.
- The Avocent® Matrix Manager allows group and device permission management, event notifications and improved auto failovers.

## Vertiv™ Avocent® LongView™ 5000 Series Extenders



**The Avocent® LongView™ 5000 series** of high performance extender solutions provide an at the desktop experience in environments where conditions make it advantageous to operate and manage critical business systems from a secure, monitored location.

- Users can access systems and applications remotely without sacrificing video quality, audio quality or device capability.
- High-definition Display Port Video Supports DisplayPort Dual Mode (DP++) and can transmit maximum resolution of up to 3840 x 2160 (UHD 4K) with a single monitor, or two 1920 x 1200 (WUXGA) video streams in a dual monitor configuration.
- USB 2.0 enables connection of up to six USB human interface devices including mice, keyboards, graphics tablets, touchscreens, jog shuttles, joysticks, 3D explorers, mass storage devices and isochronous devices like webcams and headsets.
- High definition analog stereo audio input and output. S/PDIF input also supported.
- Plug and play the LongView 5000 Series extenders are delivered in a zero config state so you can plug them in and start working right away without waiting for drivers or software to install.

## Vertiv™ Avocent® LongView™ 4000 KVM Extenders



**The Avocent® LongView™ 4000 KVM extenders** enable you to locate your critical computing hardware in a secure and temperature controlled environment, while maintaining the same user experience. This improves data security, removes computers from harsh environments and addresses limited workspace environments.

- Video, USB 2.0 (Low and Full speed) and audio all pass along a single cable, providing up to 50 meters of extension.
- The transmitter is powered via its USB port to reduce the need for external power supplies.
- Supports DVI-D (HDMI with adapter) video on single or dual screens, with resolutions up to 1920 x 1200 @ 60Hz.
- The LongView 4000 series extenders are delivered in a zero configuration state so you can plug them in and start working immediately. There's no need for additional drivers or software.
- USB 2.0 support for any USB human interface device from mice and keyboards to graphics tablets, touchscreens, jog shuttles, joysticks, 3D explorers and mass storage devices. Full speed (12Mbps) isochronous devices such as headsets are also supported.

## Vertiv™ Avocent® LongView™ 3000 KVM Extenders



**The Avocent® LongView™ 3000 extenders** let you place a keyboard, monitor, mouse, speakers and microphone up to 1,000 feet away from a computer or Avocent® KVM switch.

- VGA resolutions of 1920 x 1200 are achievable at up to 300 meters (1000ft).
- The LongView 3000 series extenders are delivered in a zero configuration state so you can plug them in and start working immediately. There's no need for additional drivers or software.
- USB 2.0 (low and full speed) support allows all USB compatible accessories (including isochronous devices) to be extended connected to its 4 port hub.

## Vertiv™ Cybex™ SC800 and SC900 Secure Desktop KVM Switches



**Certifications:** TAA compliant, BAA, Designed for NIAP / Common Criteria Protection Profile for Peripheral Sharing Device (PSD) v4.0.

The **Cybex™ SC800 / SC900 Secure Desktop KVM switches** are field-proven, secure, KVM switching solutions with special support for government agencies and security conscientious organizations.

- The Cybex™ SC800/900 DPH, DPHC, and DVI-D series secure desktop KVM switching portfolio, available in single and dual head models, eliminates redundant peripherals and reduces desktop clutter.
- Prevents information leaks, transfer or crosstalk between adjacent ports and filters ultrasonic audio frequencies via unidirectional optical data diodes (UODD).
- Active intrusion detection and tamper-evident holographic labels prevent hardware from being compromised.
- Universal Video Connectors support DP, HDMI, and DVI-D.

## Vertiv™ Cybex™ Secure MultiViewer KVM Switch



**Certifications:** Designed for Common Criteria Protection Profile for Peripheral Sharing Device (PSD) v4.0.

The **Cybex™ Secure MultiViewer KVM** continues to provide the KVM solution required in accessing both classified and non-classified data.

Simultaneously view multiple computers on a single display.

- Ability to interact with various security classifications on a single screen.
- With CNS, keyboard and mouse transitions seamlessly when moving the cursor across window borders while holding the left CTRL key.
- Universal video connectors support DP, HDMI or DVI-D.
- Smart-card (CAC) or biometric readers for authentication across multiple secure computers.
- Multi-colored button LEDs for enhanced channel identification.

## Vertiv™ Cybex™ SCM 100 Series Secure Desktop Matrix



**Certifications:** TAA compliant, BAA, Designed for NIAP / Common Criteria Protection Profile for Peripheral Sharing Device (PSD) v4.0.

The **Cybex™ SCM 145 secure desktop Matrix KVM switch** offers a proven solution for guarding against cyber intrusion at the desktop.

- Allows users to securely interact with multiple computers and observe two active computers simultaneously thus improving situational awareness Through cursor navigation switching (CNS), users have the flexibility to manage and monitor their data by simply pressing the left CTRL key and moving their mouse across window borders.
- Dedicated peripheral port permits a secure connection to external USB devices, including CAC smart card readers, fingerprint readers, and face recognition devices.
- Universal data connectors support DP, HDMI, and DVI-D.
- Protected video display emulators eliminate potential data leakage from display to computer.
- Unidirectional Optic Data Diodes (UODD) allow data to only flow in one direction.

## Vertiv™ Cybex™ SCKM 100 Secure Desktop KM Switches



**Certifications:** TAA/BAA compliant, CE, RCM, FCC class B, VCCI, TUV US, TUV Canada, Designed for NIAP / Common Criteria Protection Profile for Peripheral Sharing Device (PSD) v.4.0.

The **Cybex™ SCKM 100 switch** provides real-time access to up to 4 systems at a time from a single keyboard and mouse.

- Cursor navigation switching lets users switch control between systems by simply moving the mouse cursor from one display monitor to another while pressing the left CTRL key.
- Unidirectional Optical Data Diodes (UODD) assure YSB peripheral isolation enabling data flow from devices to host only.

## Vertiv™ Avocent® SV 200 and Vertiv™ Avocent® SV 300 Desktop KVM Switches



**Avocent® Desktop KVM switches** simplify access to essential business systems.

- Universal video connectors support DVI-D, HDMI, DisplayPort, and support for resolutions up to UHD 4K assures image quality is highly accurate and video plays at the highest definition possible.
- Managed copy and paste allows content to be copied from one system to another.
- Independent audio and USB switching lets users freeze audio and USB 3.0 peripherals while simultaneously working on a different system.
- Multiple USB ports provide easy connectivity to external USB devices, quick data transfer and high-speed charging of mobile devices.

## Vertiv™ Avocent® SVKM 100 Desktop KM Switches

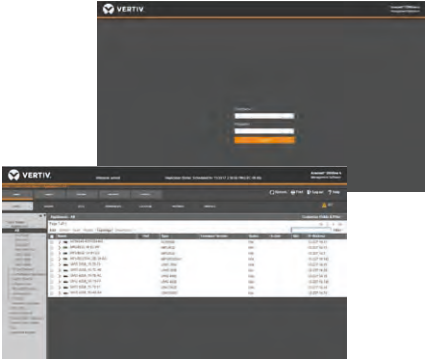


The **Avocent® SVKM 100 switch** provides real-time access to up to 4 systems at a time from a single keyboard and mouse.

- Cursor navigation switching lets users switch control between systems by simply moving the mouse cursor from one display monitor to another.
- Independent audio and USB switching gives users the ability to freeze audio and USB devices to a specific channel so these feeds are maintained as the cursor switches between system monitors.
- Managed copy and paste allows content to be copied from one system to another.
- High-speed mobile device charging port provides a quick way to charge mobile phones and other devices.
- Pre-set display configurations are easily modified for specific environments with a user-friendly administrator tool, enabling flexible assignment of USB devices for each user.

## Software

### Vertiv™ Avocent® DSView™ Software



**Avocent® DSView™ software** manages your Avocent® hardware via secured web-browser enabled sessions of infrastructure controls.

- Get remote access to servers and the network infrastructure incorporating a hub-spoke framework for database redundancy and distributed access.
- Provides detailed event tracking, session logging and alert notifications.
- Securely and conveniently combine access to out-of-band and in-band services.

### Vertiv™ Power Insight



**Vertiv™ Power Insight** is a web-based solution for managing and monitoring up to 100 Vertiv™ UPSs and rPDUs that provides a quick way to safely shutdown IT devices based on user-configured parameters.

#### Easy to Connect and Control

- Free download from Vertiv.com.
- On-premise and remote UPS and rPDU monitoring for 100 devices with notification and control for Network based devices.
- Auto-discovery of Vertiv Liebert devices for ease of installation and configuration.

#### Intelligently Controlled Shutdown

- Automatic Shutdown protection for physical and virtual servers.
- VMWare vCenter / vSphere Integration out of the box for virtual compute management.
- Sequential server shutdown function to extend runtime for the most critical loads.

#### Single Pane of Glass View

- Dashboard views of key data points such as capacity load percentage, output current, battery percentage charge and battery time remaining.
- Alarm views with data that can be sorted or filtered.
- Alarm notifications via email, SMS and on-screen icons.
- Summarized data of individual devices.



## Vertiv™ Power Assist



**Vertiv™ Power Assist** is a free software used to gracefully shutdown an IT device when the UPS battery backup experiences a threatening condition. The software notifies users of an event, displays key metrics and logs historical data. It is easy to install and protects computers from damage and data loss during a power event.

### Easy to Connect and Control

- Free download from Vertiv.com.
- Serial / USB connectivity for direct connection in personal and general business applications.
- Auto-discovery of serial port / USB connected devices.

### Intelligently Controlled Shutdown

- Directly connected compute shutdown via direct connection.
- Easy to install, configure, and upgrade.
- Automated shutdown configuration options, e.g., remaining battery percentage or runtime.
- Scripted sequential and scheduled shutdown for virtual compute and non-graphical user interface based devices.

### Monitoring & Management

- Immediate alarm notifications via email.
- On-Screen Dashboard - displays key system status information and alarms.
- Data and alarm storage for analysis.
- Maintenance mode; shutdown on-hold temporarily.

## Vertiv™ Environet™ Alert



**Vertiv™ Environet™ Alert** is an easy to use, affordable software solution which provides remote monitoring for critical infrastructure.

- **Increase business flexibility** – Vendor neutral device management at no additional cost to run your business the way you need. Supports device communication via SNMP, Modbus TCP/IP and BACnet IP.
- **Affordable solution** – Environet™ Alert is a budget-friendly solution, making it easy to deploy for SMBs, edge facilities and enterprise data centers.
- **Fast and easy configuration** – Manage your own system configuration and changes, eliminating the need for support touchpoints (optional service packages are available).
- **Customize your data** – Set your own views with our modern user interface to focus on the data you need most for your business.
- **Connect all operations** – Use our API to connect to remote DCIM and building management systems (BMS) for a more complete picture of your operations.

## Rack Cooling

### Vertiv™ Geist™ SwitchAir™



**Certifications:** TAA/BAA compliant.

The **Vertiv™ Geist™ SwitchAir™** helps prevent failure by channeling cool air from the front of the rack to the air intakes regardless of where the equipment is mounted.

- Creates a barrier to effectively prevent hot exhaust air from recirculating to device intakes.
- Simple and quick installation in all standard racks or cabinets.
- Reduces the chance of network switches overheating and premature equipment failure due to high intake temperatures by directing cool air to device intakes.
- Improves equipment efficiency by providing network equipment with the same cold aisle air temperature as other devices in the rack.
- Standard three-year warranty, upgraded to five years with product registration.

### Vertiv™ VRC Rack Cooling System, 3500 Watts



The **Vertiv™ VRC Rack Cooling System** provides cooling for small IT rooms.

- Fast, easy installation and set-up: Self-contained VRC100 series models include integrated heat rejection system, pre-charged with refrigerant, and plug connection for quick plug-and-play installation.
- Designed to fit within standard 19" network rack rails.
- Easy to handle; under 150 lbs.
- Saves floor space: Self-contained rack-mounted cooling system: 10U.
- Standard three-year warranty covering every component of the system.

## Site Applied Products

Contact your Local Vertiv Office for application support and pricing.

### Vertiv™ SmartRow™ Intelligent, Integrated Infrastructure in a Self-Contained Line-Up



The **Vertiv™ SmartRow™** solution has a room neutral design that lets you avoid many of the significant costs that come with a conventional data center buildout.

- Favorable implementation costs compared to using a conventional data center approach, due to savings from integrated fire suppression and ability to work in an existing non-raised floor environment without dedicated room cooling.
- Reduce energy consumption by up to 27% compared to a data center with conventional design, perform less maintenance and reduce the costs of adding new equipment.
- Order and install in just weeks.

**Capacity:** 20-36kW 3-10 racks.

**Type:** Self-contained.

**Floor:** Primarily non-raised.

**Key Applications:** Small data centers, remote sites, disaster recovery.

**Certifications:** TAA/BAA compliant.

## Vertiv™ Liebert® CRV Self-Contained Row-Based Data Center Cooling, 10-40kW



**The Liebert® CRV system** offers highly flexible, in-row cooling for data centers requiring higher density cooling with greater efficiency and capacity.

- Integrates within a row of data center racks, providing cooling close to the server heat source, for efficient and effective data center heat management.
- Precision cooling and humidity control.
- Features variable speed EC plug fans and variable capacity digital scroll compressor.
- Operates efficiently with Vertiv™ Liebert® iCOM™ controls.

**Certifications:** TAA/BAA compliant, AHRI.

## Vertiv™ Liebert® EXM 3 Phase-UPS, 10-250kVA



**The row-based Liebert® EXM** is a transformer-free, on-line UPS that provides modular hardware scalability and N+1 redundancy from 10-200kVA in 208 volt configurations and 50-250kVA in 480 volt configurations.

- Reduces energy consumption and operating expenses with up to 99% efficiency in Eco Mode and up to 97% efficiency in double conversion mode.
- Offers future-proof scalability for capacity or redundancy.
- Complemented with a line of optimized ancillaries such as maintenance bypass and battery cabinet options designed to minimize footprint and cost.
- Innovative touchscreen control panel offering unprecedented situational awareness, customer configurability, multiple levels of access security and glove safe operation.
- Improves issue resolution and enhances reliability via the optional integrated Albér™ BDSUi battery monitoring system, compatible with traditional VRLA batteries, Lithium Ion batteries, or other energy storage devices.
- Leverage the capabilities of our Unity Communications card and sensors to monitor temperature, humidity, access, leaks and more.



**Certifications:** TAA/BAA compliant, UL 1778 , UL 924 and CSA certified. Meets current requirements for safe high performance UPS operation. ENERGY STAR qualified.

## Vertiv™ Liebert® Mini-Mate Cooling System 3.5/28kW



**The Liebert® Mini-Mate** is a zero footprint computer room cooling system for 7x24 temperature and humidity control and air filtration.

- Requires no floor space because it installs above a dropped ceiling.
- Easy to service, requiring only front access for maintenance.
- Improves energy efficiency with free-cooling option.



**Vertiv.com** | Vertiv Headquarters, 1050 Dearborn Drive, Columbus, OH, 43085, USA

© 2022 Vertiv Group Corp. All rights reserved. Vertiv™ and the Vertiv logo are trademarks or registered trademarks of Vertiv Group Corp. All other names and logos referred to are trade names, trademarks or registered trademarks of their respective owners. While every precaution has been taken to ensure accuracy and completeness here, Vertiv Group Corp. assumes no responsibility, and disclaims all liability, for damages resulting from use of this information or for any errors or omissions. Specifications, rebates and other promotional offers are subject to change at Vertiv's sole discretion upon notice.

VR-01407 (R04/22)